



Financial Data Connector

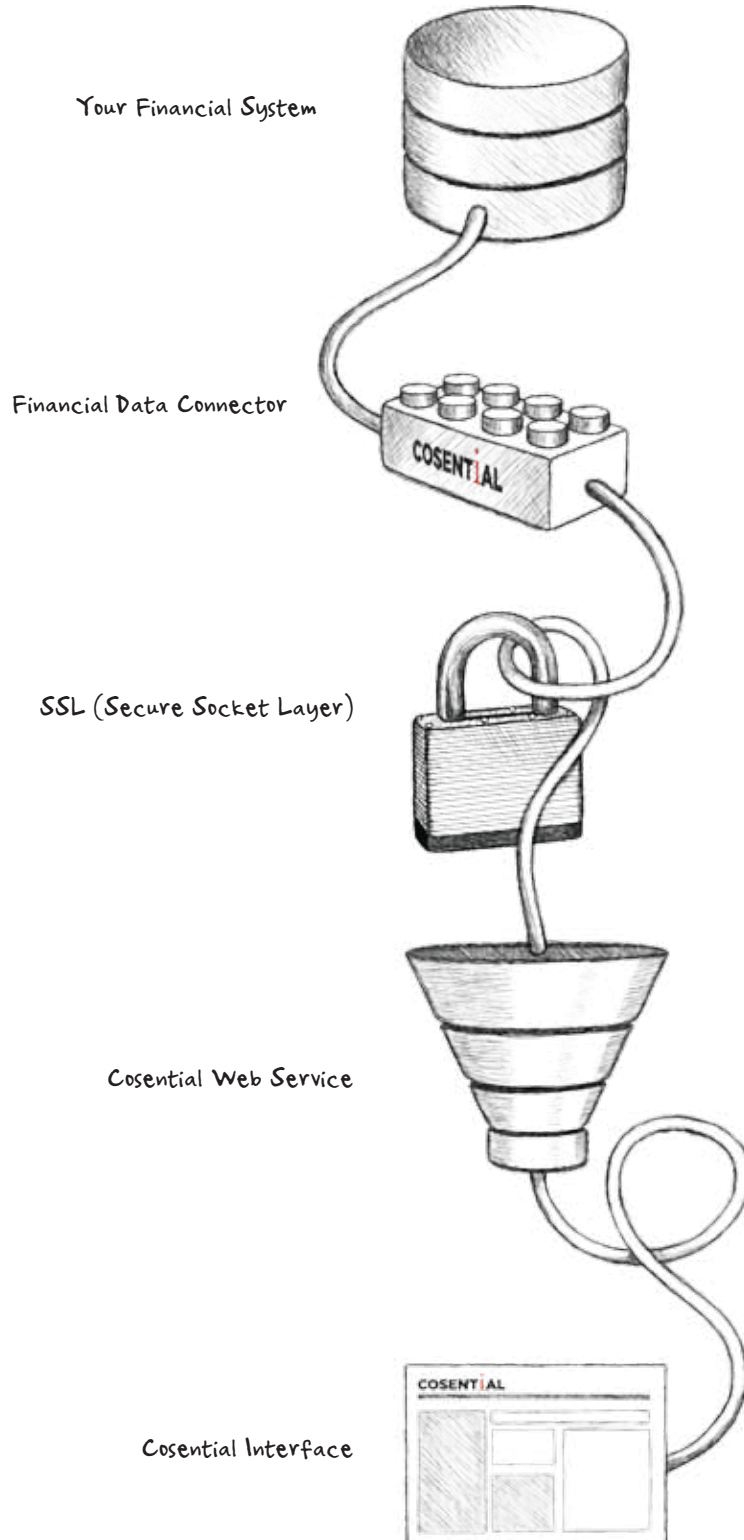
Connect your financial system to Cosential to quickly and securely sync your project-specific marketing and financial data. You simply select which project, personnel, company and contact data fields you'd like to connect. Your Cosential implementation expert then configures your Financial Data Connector to automatically update at your specified interval, ensuring that your marketing data and materials are effortlessly kept current in Cosential. Cosential also can update data in your financial system, creating new project records or updating specified fields.

Features

- **All Key Financial and Marketing Fields Supported** - The Financial Data Connector connects hundreds of key marketing and financial data fields, including project name (separate marketing and financial names), cost and fee data, schedule dates, consultant team members, staff, client and owner, and categorization fields such as office, division, services, contract type, SF330 codes, and custom categories.
- **Prepare Accurate Submittals Faster** - Connecting your data can help ensure that your marketing department has the most complete and correct information when promoting a completed project. When project staff and personnel records are updated nightly, Marketing can be sure that the resumes they prepare have the personnel's most up-to-date project experience. When fee and cost data is refreshed via the connector, the same, accurate numbers are instantly reflected in all marketing materials that reference the project: from resumes, to project profiles, to project lists and government forms.
- **Choose the Data You'd Like to Update** - We can bring in all key data fields via the financial data connector; we work with you to create a custom script that brings in the data that will be most valuable to your marketing department.
- **Add Financial Data to Marketing Data** - When client, owner, consultant and personnel information are brought into Cosential via the connector, this data can be added to records created by marketing so that the complete picture of a project's relationships and personnel roles can be tracked.
- **Ensure Data Integrity with Duplicate Checking** - Sophisticated data sync mapping tools for company and personnel records ensure the integrity of your data while allowing different field values to be matched correctly and prevent the creation of duplicates.
- **Update at Any Interval** - The data connector can be scheduled to run nightly, at timed intervals, or in real-time.
- **Easily Customizable** - The open source code, written in industry-standard PHP and MYSQL, can be modified by your firm's IT staff.

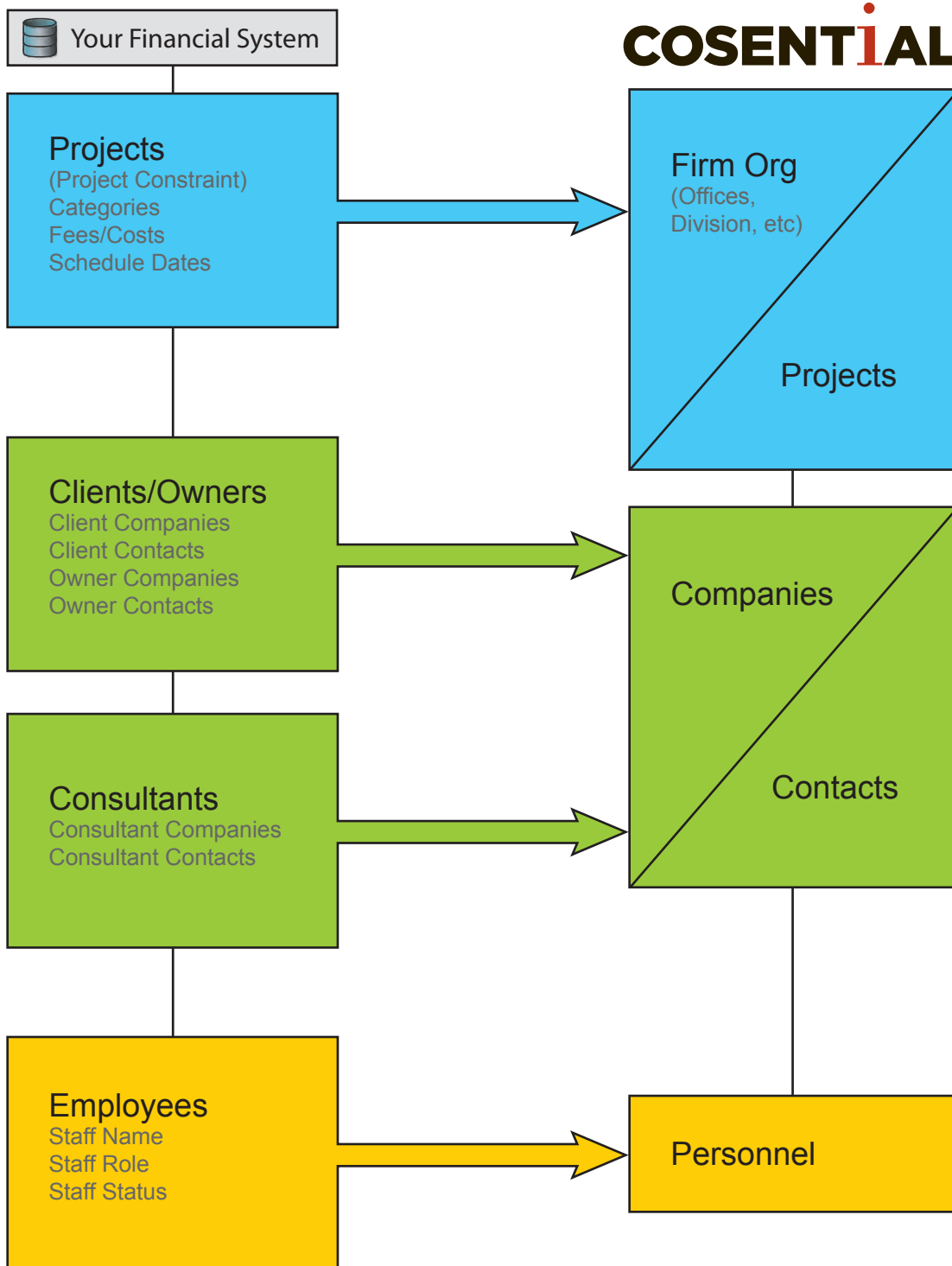


Financial Data Connector





Financial Data Connector





Financial Data Connector



Financial Data Connector Security

We take security very seriously at Cosential. The financial data connector was designed with this priority in mind.

1. All data is transmitted using 256-bit encryption via secure https protocol - the same level of encryption as secure credit card transactions.
2. Your financial system's performance and data integrity is maintained at all times. Data is retrieved according to your schedule via permissioned read-only access.
3. You control the tables and the fields from your financial system that send data to Cosential.
4. Data pushed to Cosential does not contain any confidential information such as salary information, Social Security Numbers, or other core financial performance data.
5. You can configure the connection's security using your protocols and firewall permissioning so that only Cosential's dedicated server can retrieve the data.
6. The Financial Data Connector script is open source so that your staff may examine it and understand exactly how the connection works.
7. You can turn off the Financial Data Connector at any time.
8. Each FDC transaction is logged.



Financial Data Connector Implementation

The Financial Data Connector can be installed quickly. There are a few steps necessary to accomplish this.

1. Set up a machine for the Financial Data Connector. We recommend a dedicated computer or virtual machine with at least 4-6 gigs of ram.
2. Map the data with your implementation specialist. We share a sample mapping spreadsheet with you and discuss all the mappable options. Custom fields usually require some investigation.
3. Run a test Import to confirm the mapping.
4. Modify mappings, if necessary.
5. Set Financial Data Connector to run automatically. It can be scheduled to run nightly or at regularly timed-intervals.